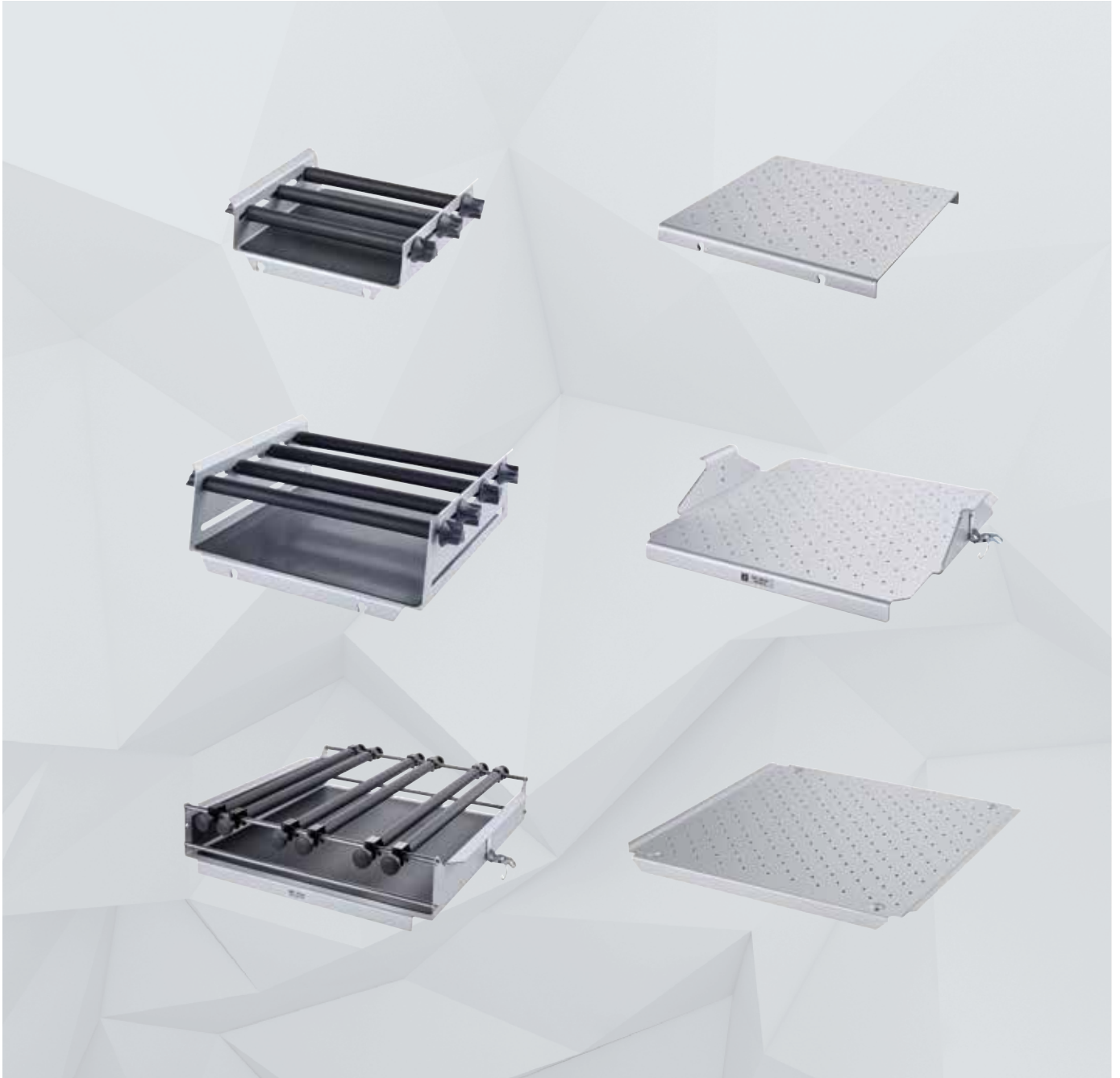


# IKA

designed for scientists

CN



选择指南  
如何选择合适的摇床和配件

# 摇床

## /// 选择适合您应用的配件

IKA 为实验室混合应用提供完善的解决方案。除了久经市场检验的圆周摇床和水平摇床，革新性的控温摇床也深受实验室好评。精确的温控系统使得控温摇床成为实验室的可靠资产。搭配锥形瓶夹具、通用夹具或黏垫可以满足多种应用需求。



# 如何选择合适的摇床

## /// 选型指南

应用	混匀直径	最大承重	转速范围	建议选用的 IKA 仪器
----	------	------	------	--------------

### 涡旋混匀 垫片产生涡旋式振动

适合混匀小体积试管和微孔板	3 mm	0.5 kg	0 – 3000 rpm	MATRIX Orbital MATRIX Orbital Delta MATRIX Orbital Delta Plus
	4.5 mm	0.5 kg	0/200 – 3000 rpm	MS 3 basic   digital   control
适用于直径 30 mm 以内的样品管， 如试管、离心管和微量离心管	4.5 mm	0.5 kg	2800 rpm (固定转速)	Hula Dancer basic
	4.5 mm	0.5 kg	1200 – 2800 rpm	Hula Dancer digital
	4.5 mm	最大 50 ml (单管)	2800 rpm (固定转速)	lab dancer
	4.5 mm	0.1 kg	1000 – 2800 rpm	VORTEX 1
适用于振荡试管、微量离心管、玻 璃试剂管 / 小样品管、锥形瓶 / 圆 底烧瓶和微孔板	4 mm	0.4 kg	500 – 2500 rpm	VORTEX 2
	4 mm	0.4 kg	500 – 2500 rpm	VORTEX 3
	4 mm	2 kg	100 – 2200 rpm	VXR basic Vibrax®
	3 mm	2 或 4 块酶标板	50 – 1100 rpm	MTS 2/4 digital microtiter shaker

### 圆周振荡 摇板沿圆周轨道运动

无人值守的控温环境的理想选择	20 mm	20 kg	10 – 500 rpm	KS 4000 i control   ic control
	20 mm	7.5 kg	10 – 500 rpm	KS 3000 i control   ic control
	4 mm	2 kg	80 – 800 rpm	KS 130 basic   control
适用于振荡试管、微孔板、容量瓶、 锥形瓶和烧杯	10 mm	7.5 kg	50 – 500 rpm	KS 260 basic
	10 mm	7.5 kg	10 – 500 rpm	KS 260 control
	30 mm	15 kg	0 – 300 rpm	KS 501 digital



MATRIX Orbital



lab dancer



VORTEX 3



KS 3000 i control

# 如何选择合适的摇床

## /// 选型指南

应用	混匀直径	最大承重	转速范围	建议选用的 IKA 仪器	
 <b>往复振荡</b> 摇板水平往复移动	20 mm	7.5 kg	20 – 300 rpm	HS 260 basic	
	用于样品的振荡、洗脱、萃取、脱气、溶解及浓缩等	20 mm	7.5 kg	10 – 300 rpm	HS 260 control
		30 mm	15 kg	0 – 300 rpm	HS 501 digital
 <b>摇摆 (跷跷板式)</b> 摇板沿中心轴上下摇摆	8° (角度)	2 kg	5 – 80 rpm	ROCKER 2D basic	
	适用于对烧瓶, 培养瓶, 皮氏培养皿和试管进行均匀混合	0 – 15° (角度)	2 kg	5 – 80 rpm	ROCKER 2D digital
 <b>摇摆 (3D 翻滚式)</b> 摇板进行三维摇摆	8° (角度)	2 kg	30 rpm (固定转速)	ROCKER 3D basic	
	适用于柔和混匀(减小泡沫产生)、DNA 提取、染色和脱色处理等	0 – 15° (角度)	2 kg	0 – 80 rpm	ROCKER 3D digital
 <b>摇摆和翻转</b> 摇板沿中心轴上下摇摆的同时也围绕着一个定点旋转	24.5 mm (高度)	2 kg	30 rpm (固定转速)	ROLLER 6 basic	
	推荐用于一些气密混匀应用, 如混匀血液样品、粘性物质、悬浮液等	24.5 mm (高度)	2 kg	0 – 80 rpm	ROLLER 6 digital
		24.5 mm (高度)	2 kg	30 rpm (固定转速)	ROLLER 10 basic
		24.5 mm (高度)	2 kg	0 – 80 rpm	ROLLER 10 digital
 <b>旋转混匀</b> 摇板按某个倾斜角度旋转	可从水平调至垂直	2 kg	20 rpm (固定转速)	Loopster basic	
	通用型混匀器, 保持生物样品悬浮状态的理想选择	可从水平调至垂直	2 kg	0 – 80 rpm	Loopster digital
		垂直或水平	2 kg	20 rpm (固定转速)	Trayster basic
		垂直或水平	2 kg	0 – 80 rpm	Trayster digital



ROCKER 3D digital



ROLLER 6 digital



Loopster digital



Trayster digital

# 摇床配件及可放容器数量

## /// 不同规格容器的容量

IKA 摇床	夹具组合	25 ml	50 ml	100 ml	200 ml	250 ml	500 ml	1000 ml	2000 ml	3000 ml	5000 ml
<b>锥形瓶</b>											
KS 130 basic KS 130 digital	STICKMAX 粘垫	25	16	9	-	5	4	2	1	1	-
	AS 130.1 通用夹具	15	12	6	-	2	2	1	1	1	-
	搭配 AS 130.1 所需固定棒数量	4	4	3	-	2	2	2	2	2	-
	AS 130.2 摇板 (不含固定夹)	12	12	9	-	4	4	-	-	-	-
KS 260 basic KS 260 digital HS 260 basic HS 260 control	STICKMAX 粘垫	44	36	25	-	9	9	4	2	2	1
	AS 260.1 通用夹具	28	24	15	-	6	6	2	1	1	1
	搭配 AS 260.1 所需固定棒数量	5	5	4	-	3	3	2	2	2	2
	AS 260.2 摇板 (不含固定夹)	31	28	17	-	10	9	5	4	-	-
KS 501 digital HS 501 digital	STICKMAX 粘垫	100	64	36	-	25	16	9	4	4	2
	AS 501.1 通用夹具	70	48	30	-	20	12	9	4	4	1
	搭配 AS 501.1 所需固定棒数量	7	6	5	-	4	3	6	3	3	2
	AS 501.4 摇板 (不含固定夹)	55	50	30	-	12	11	8	5	-	-
KS 3000 i control KS 3000 ic control	STICKMAX 粘垫	44	36	25	-	9	9	4	2	-	-
	AS 260.1 通用夹具	28	24	15	-	6	6	2	-	-	-
	搭配 AS 260.1 所需固定棒数量	5	5	4	-	3	3	2	-	-	-
	AS 260.2 摇板 (不含固定夹)	31	28	17	-	10	9	5	-	-	-
KS 4000 i control KS 4000 ic control	STICKMAX 粘垫	81	49	36	-	16	9	9	4	2	-
	AS 4000.1 通用夹具	54	35	24	-	12	9	6	4	2	-
	搭配 AS 4000.1 所需固定棒数量	7	6	5	-	4	4	3	3	2	-
	AS 4000.2 摇板 (不含固定夹)	55	52	25	-	16	11	7	4	-	-
<b>容量瓶</b>											
KS 130 basic KS 130 digital	STICKMAX 粘垫	25	16	9	6	6	4	2	**	-	-
	AS 130.1 通用夹具	20	12	6	6	2	2	-	-	-	-
	搭配 AS 130.1 所需固定棒数量	5	4	3	3	2	2	-	-	-	-
	AS 130.2 摇板 (不含固定夹)	18	9	8	4	4	4	-	-	-	-
KS 260 basic KS 260 digital HS 260 basic HS 260 control	STICKMAX 粘垫	49	36	25	16	9	9	4	**	-	-
	AS 260.1 通用夹具	32	24	15	8	8	6	2	**	-	-
	搭配 AS 260.1 所需固定棒数量	5	5	4	3	3	4	2	**	-	-
	AS 260.2 摇板 (不含固定夹)	30	30	23	9	9	9	5	4	-	-
KS 501 digital HS 501 digital	STICKMAX 粘垫	100	64	36	25	16	9	9	**	-	-
	AS 501.1 通用夹具 + 10 AS 1.11 固定棒 + 20 AS 1.6 固定螺丝	70	48	30	20	20	12	9	**	-	-
	搭配 AS 501.1 所需固定棒数量	7	6	5	4	4	3	3	**	-	-
	AS 501.2 分液漏斗夹具	55	54	35	19	19	11	8	5	-	-
KS 3000 i control KS 3000 ic control	STICKMAX 粘垫	49	36	25	16	9	6	-	-	-	-
	AS 260.1 通用夹具	32	24	15	8	8	6	-	-	-	-
	搭配 AS 260.1 所需固定棒数量	5	5	4	3	3	4	-	-	-	-
	AS 260.2 摇板 (不含固定夹)	30	30	23	9	9	5	-	-	-	-
KS 4000 i control KS 4000 ic control	STICKMAX 粘垫	100	64	36	25	25	16	6	-	-	-
	AS 4000.1 通用夹具	60	40	24	20	15	12	6	-	-	-
	搭配 AS 4000.1 所需固定棒数量	7	6	5	5	5	6	4	-	-	-
	AS 4000.2 摇板 (不含固定夹)	55	55	32	21	21	12	5	-	-	-

如有变更, 恕不另行通知。

\* 有限推荐! \*\* 不推荐!



AS 130.2



AS 260.2



AS 501.4



AS 4000.2

# 摇床配件及可放容器数量

## /// 不同规格容器的容量

IKA 摇床	夹具组合	25 ml	50 ml	100 ml	150 ml	250 ml	400 ml	600 ml	800 ml	1000 ml	2000 ml	3000 ml	5000 ml	10 000 ml
<b>烧杯 (高脚)</b>														
KS 130 basic KS 130 digital	STICKMAX 粘垫	36	16	9	9	9	5	4	4	4	1	1	-	-
	AS 130.1 通用夹具	18	15	8	6	6	4	2	2	2	1	1	-	-
	搭配 AS 130.1 所需固定棒数量	4	4	3	3	3	3	2	2	2	2	2	-	-
KS 260 basic KS 260 digital HS 260 basic HS 260 control	STICKMAX 粘垫	81	49	25	25	16	16	9	9	9	4	4	-	-
	AS 260.1 通用夹具	45	28	18	15	15	8	6	6	6	2	2	-	-
	搭配 AS 260.1 所需固定棒数量	6	5	4	4	4	3	3	3	3	2	2	-	-
KS 501 digital HS 501 digital	STICKMAX 粘垫	121	81	49	36	36	25	16	16	9	9	4	-	-
	AS 501.1 通用夹具	96	63	42	36	30	25	16	12	12	9	4	-	-
	搭配 AS 501.1 所需固定棒数量	8	7	6	5	5	4	4	3	3	3	2	-	-
KS 3000 i control KS 3000 ic control	STICKMAX 粘垫	81	49	25	25	25	16	9	9	9	4	-	-	-
	AS 260.1 通用夹具	45	28	18	15	15	8	6	6	6	2	-	-	-
	搭配 AS 260.1 所需固定棒数量	6	5	4	4	3	3	3	3	3	2	-	-	-
KS 4000 i control KS 4000 ic control	STICKMAX 粘垫	121	81	49	36	36	25	16	16	9	9	4	-	-
	AS 4000.1 通用夹具	84	48	35	24	20	20	12	12	12	6	4	-	-
	搭配 AS 4000.1 所需固定棒数量	8	7	6	5	5	5	4	4	4	3	3	-	-
<b>烧杯 (矮脚)</b>														
KS 130 basic KS 130 digital	STICKMAX 粘垫	25	16	9	9	5	4	4	4	4	1	1*	1*	**
	AS 130.1 通用夹具	15	8	8	6	3	2	2	2	2	1	1*	-	-
	搭配 AS 130.1 所需固定棒数量	4	3	3	3	3	2	2	2	2	2	2	-	-
KS 260 basic KS 260 digital HS 260 basic HS 260 control	STICKMAX 粘垫	64	49	25	25	16	9	9	5	5	4	2	1	1*
	AS 260.1 通用夹具	32	24	15	12	8	6	6	6	4	2	2	1	1*
	搭配 AS 260.1 所需固定棒数量	5	5	4	4	3	3	3	3	3	2	2	2	2
KS 501 digital HS 501 digital	STICKMAX 粘垫	100	64	49	36	25	16	16	9	9	9	4	4	1
	AS 501.1 通用夹具	70	48	42	30	20	16	12	12	9	6	4	1	1
	搭配 AS 501.1 所需固定棒数量	7	6	6	5	4	4	3	3	3	2	2	2	2
KS 3000 i control KS 3000 ic control	STICKMAX 粘垫	64	49	25	25	16	9	9	5	5	4	-	-	-
	AS 260.1 通用夹具	32	24	15	12	8	6	6	4	4	2	2	-	-
	搭配 AS 260.1 所需固定棒数量	5	5	4	4	3	3	3	3	4	2	1	-	-
KS 4000 i control KS 4000 ic control	STICKMAX 粘垫	100	64	49	36	25	16	16	10	10	9	4	2	-
	AS 4000.1 通用夹具	66	40	35	20	20	12	12	9	6	4	4	2	-
	搭配 AS 4000.1 所需固定棒数量	7	6	6	5	5	4	4	4	3	3	3	2	-

如有变更, 恕不另行通知。

\* 有限推荐! \*\* 不推荐!



AS 130.1



AS 260.1



AS 501.1



AS 4000.1